



Hurdle Drove, West Row, IP28 8RF

Rent - £1,600 PCM

Deposit - £1,846

This beautifully laid-out ground floor property offers generous living space, making it ideal for families, professionals, or military personnel. The home features multiple bedrooms, a dedicated study, a large lounge perfect for relaxing or entertaining, and a bright conservatory that adds a touch of charm.

The open-plan kitchen/diner is the heart of the home, ideal for hosting and everyday living. A separate utility room adds practicality, while the modern bathroom and welcoming entrance hall complete the space.

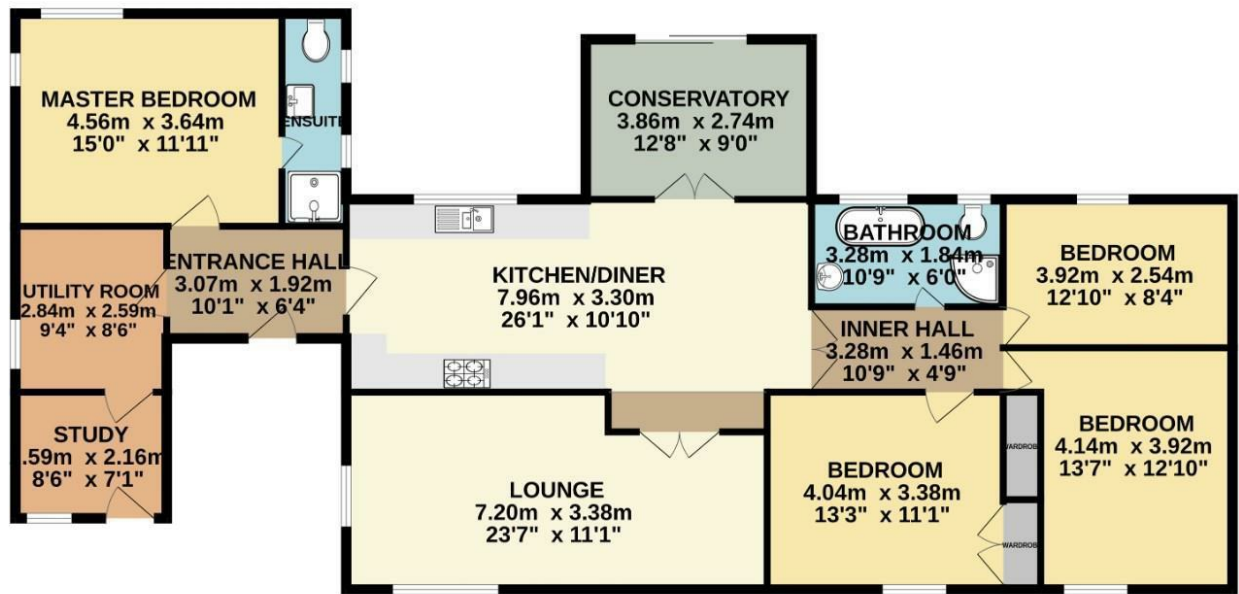
Located conveniently near local military bases, this property is perfect for those seeking a comfortable and well-connected home. Available now – contact us today to arrange a viewing!

- PRIME LOCATION NEAR MILITARY BASES
- SEPARATE UTILITY ROOM
- BRIGHT CONSERVATORY
- DEDICATED STUDY
- SPACIOUS GROUND FLOOR LAYOUT
- MODERN BATHROOM
- OPEN-PLAN KITCHEN/DINE
- LARGE LOUNGE AREA
- MULTIPLE BEDROOMS
- AVAILABLE NOW!



Council Tax Band: C - EPC Rating: D 60

GROUND FLOOR
151.3 sq.m. (1628 sq.ft.) approx.



TOTAL FLOOR AREA : 151.3 sq.m. (1628 sq.ft.) approx.

Whilst every attempt has been made to ensure the accuracy of the floorplan contained here, measurements of doors, windows, rooms and any other items are approximate and no responsibility is taken for any error, omission or mis-statement. This plan is for illustrative purposes only and should be used as such by any prospective purchaser. The services, systems and appliances shown have not been tested and no guarantee as to their operability or efficiency can be given.
Made with Metropix ©2025

